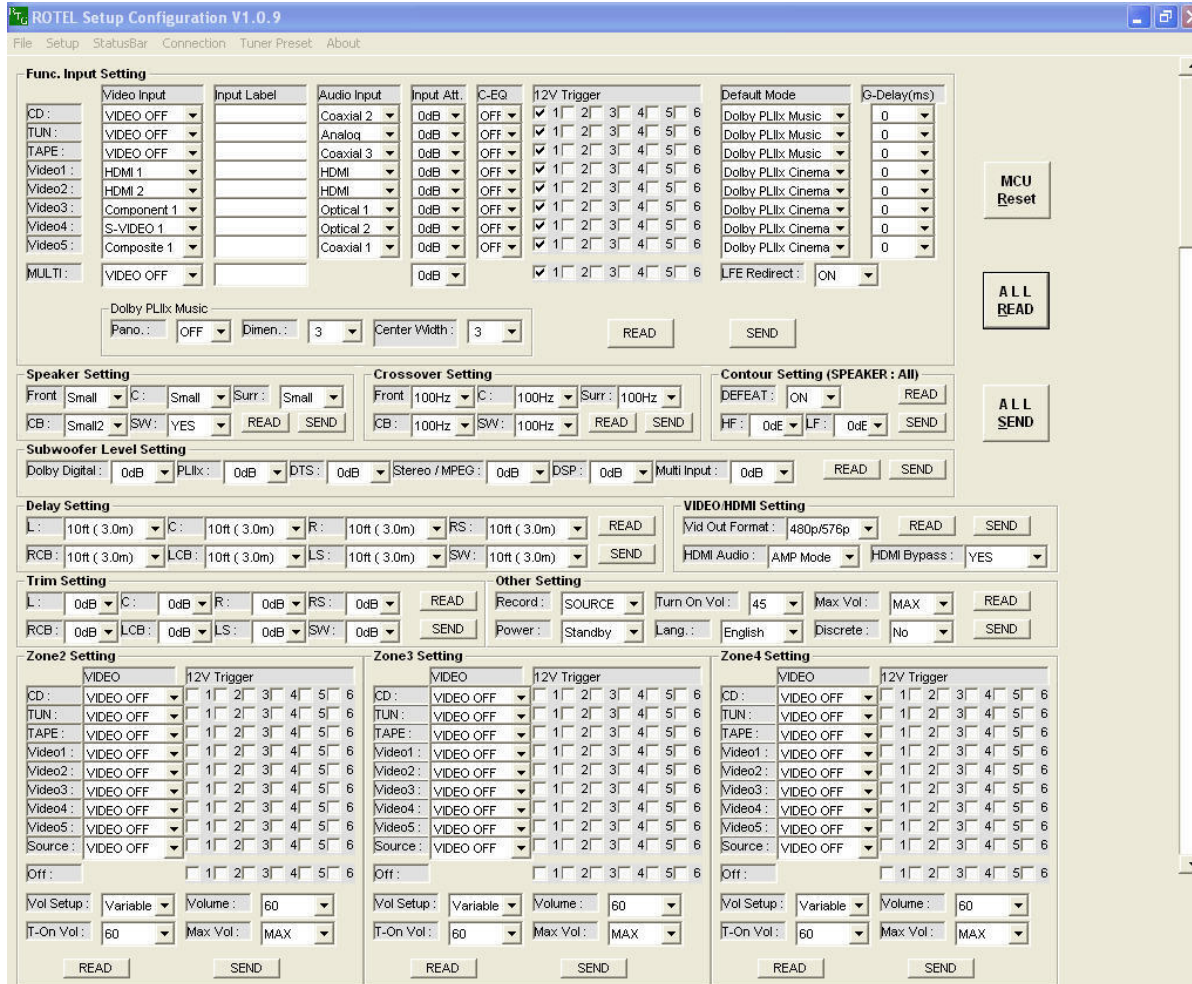


Rotel Setup Configuration Program



The Rotel Setup Configuration program is an easy way to make system adjustments for:

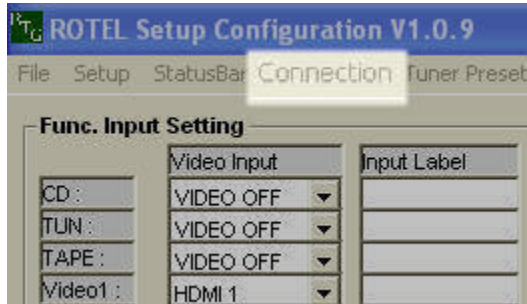
- RSP 1069
- RSX 1058
- RSP 1570
- RSX 1550
- RSX 1560
-

Necessary equipment:

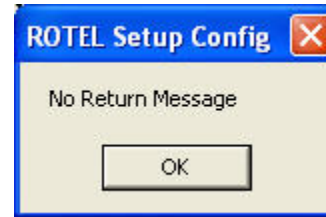
- computer with serial port
- RS-232 cable (from unit)
- Setup Configuration program available at www.rotel.com

Connection:

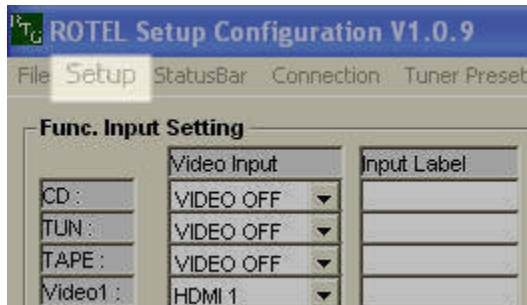
Connect the RS-232 cable to the unit and the computer. Make sure the unit is turned on at the back panel. It can be in either standby or power on mode. Launch the Setup Configuration program.



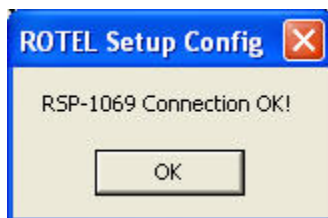
Select the **Connection** tab to see a small message window pop up to confirm the connection.



If there is a problem, select the **Setup** tab to set the correct COM PORT and BAUD rate



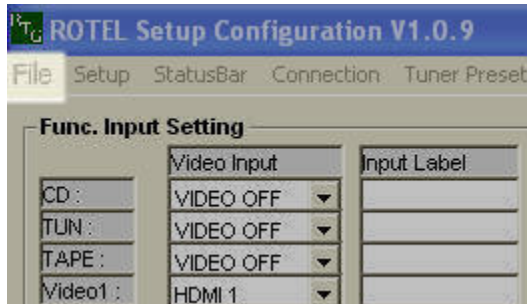
Select COM 1, COM 2, COM 3, COM 4 or COM 5 according to your computer setup. The RSP 1069 and RSX 1058 are **38400** BAUD. The RSP 1570, RSX 1550 and RSX 1560 are **115200** BAUD.



Select the **Connection** tab again.

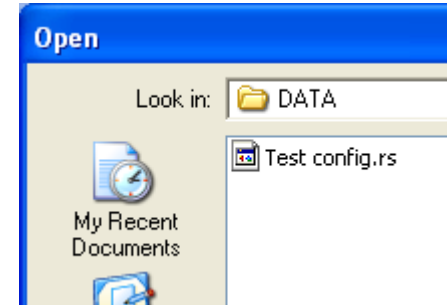


Once connected, selecting the **Connection** tab again by mistake is no problem.

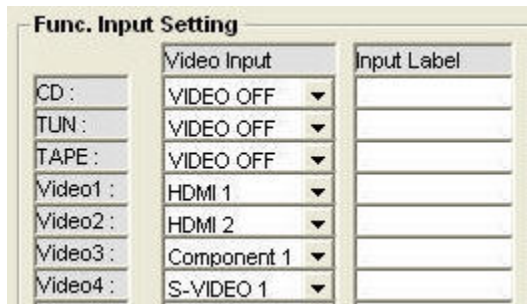


Quick Step:

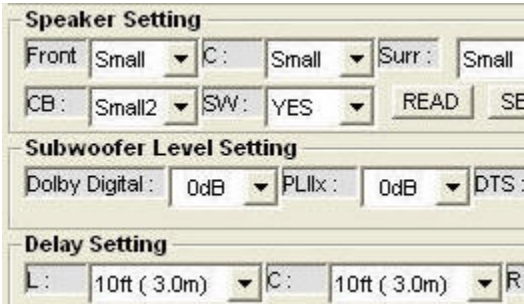
Select **File**, and then **Open** to locate the configuration file that most closely matches your system.



Once the file is open, select **All Send** to configure the unit. A small flashing icon will blink beneath the All Send button for a few seconds to signify configuration in progress. When the icon disappears, configuration is complete. Disconnect the RS-232 cable from the unit and computer.



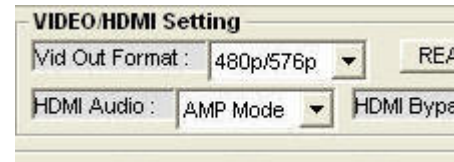
If some adjustments need to be made, use the cursor to select the appropriate **Input** settings and to type labels.



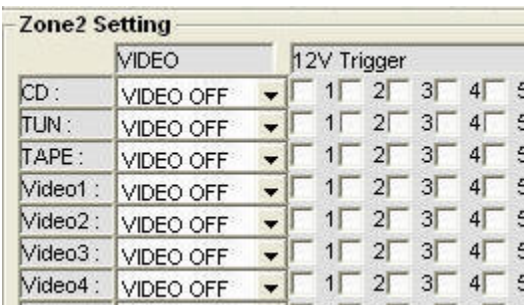
Speaker, Subwoofer and other adjustments can be made the same way. **Note:** Individual speaker settings for Dolby, DTS, Stereo and DSP can be done through the unit on screen menu.



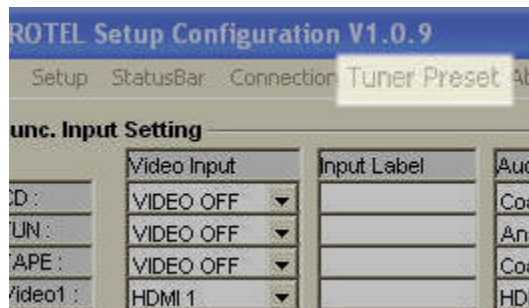
Note: Individual speaker **Contour** adjustments can be done through the unit on screen menu.



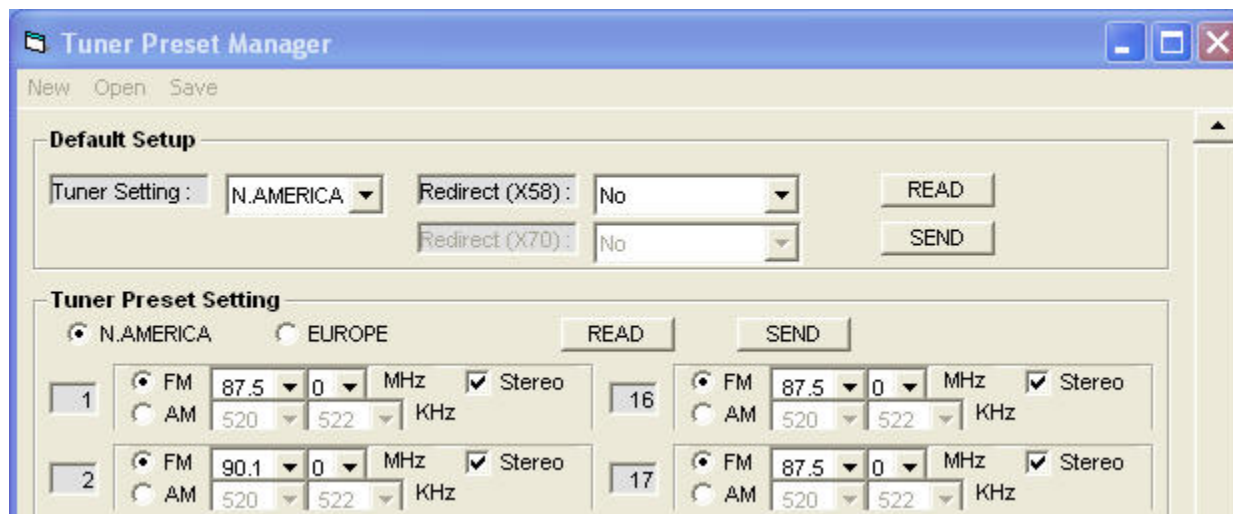
The RSP 1069 and RSX 1058 will accept the **HDMI** bypass setting.



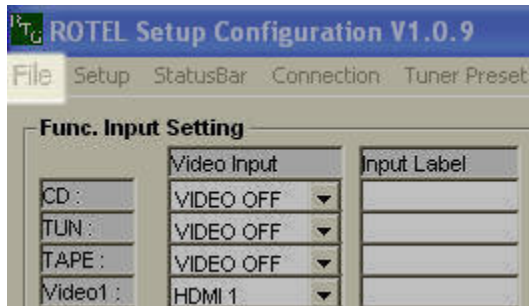
Zone adjustments can be made if needed.



Select the **Tuner** tab to configure RSX 1058, RSX 1550 and RSX 1560 presets.



Once configuration is complete, select **All Send**.



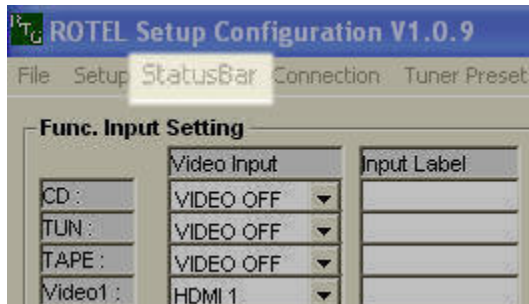
Select the **File** tab to **Save** your configuration.



To return the unit to factory settings, select **MCU Reset**.



To determine how a unit is already configured, select **All Read**.



To view program status, select the **Status** tab.

