

MICHI

Technical Service Bulletin

June 16, 2023

Michi Bluetooth 5.1 aptX™ HD Module

The latest Apple iOS version (including OS V15.7.2) may cause the APPLE MUSIC app to stop playing audio when manually jumping between tracks in a playlist. The Bluetooth connection is maintained but there is no audio output and no playback information (sample frequency and/or bit rate) displayed. A hard power cycle of the unit remedies this issue.

Earlier versions of iOS do not appear to have the same issue. Other iOS Apps (i.e. iTunes, Spotify, Tidal, etc.) are NOT affected by this use case.

If this is reported, please contact Rotel at sales@rotelglobal.com to order a new Bluetooth 5.1 module (Rotel Part Number: **093E-BTM0002-D-3**) with updated firmware V1.04 (or newer) that resolves this iOS compatibility issue.

Note: All new delivered spare parts will be programmed by new firmware V1.04 (or newer) before package and shipment from now on, either of below two methods can help to identify this change.

1. Check and ensure a printed label with text "V1.04" being pasted on plastic package.



2. Or check and ensure the last 5 digits on the pasted BT ADDRESS label are higher than "28780"



Bluetooth module replacement requires removal of the top cover and replacing the Bluetooth module in the socket (no special tools or soldering is required) as shown below.

Affected unit models include: **X3, X5, P5, X3 Series 2, X5, Series 2, P5 Series 2**

MICHI

Release Type		
Maintenance	Major	Critical

X3 Series 2

Software Information	
Main Version	V2.00

Serial Number (Change will be effective in units after the serial numbers listed below.)	
Black	283-314-1050

X5 Series 2

Software Information	
Main Version	V2.02

Serial Number (Change will be effective in units after the serial numbers listed below.)	
Black	284-315-1050

P5 Series 2

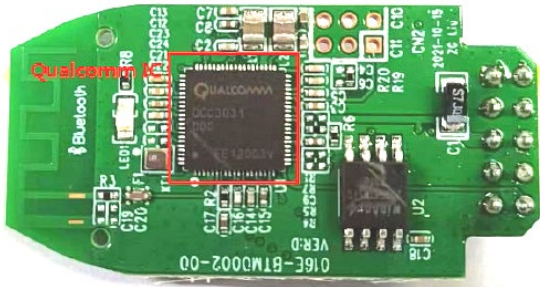
Software Information	
Main Version	V2.00

Serial Number (Change will be effective in units after the serial numbers listed below.)	
Black	282-310-1050

MICHI

Release Notes

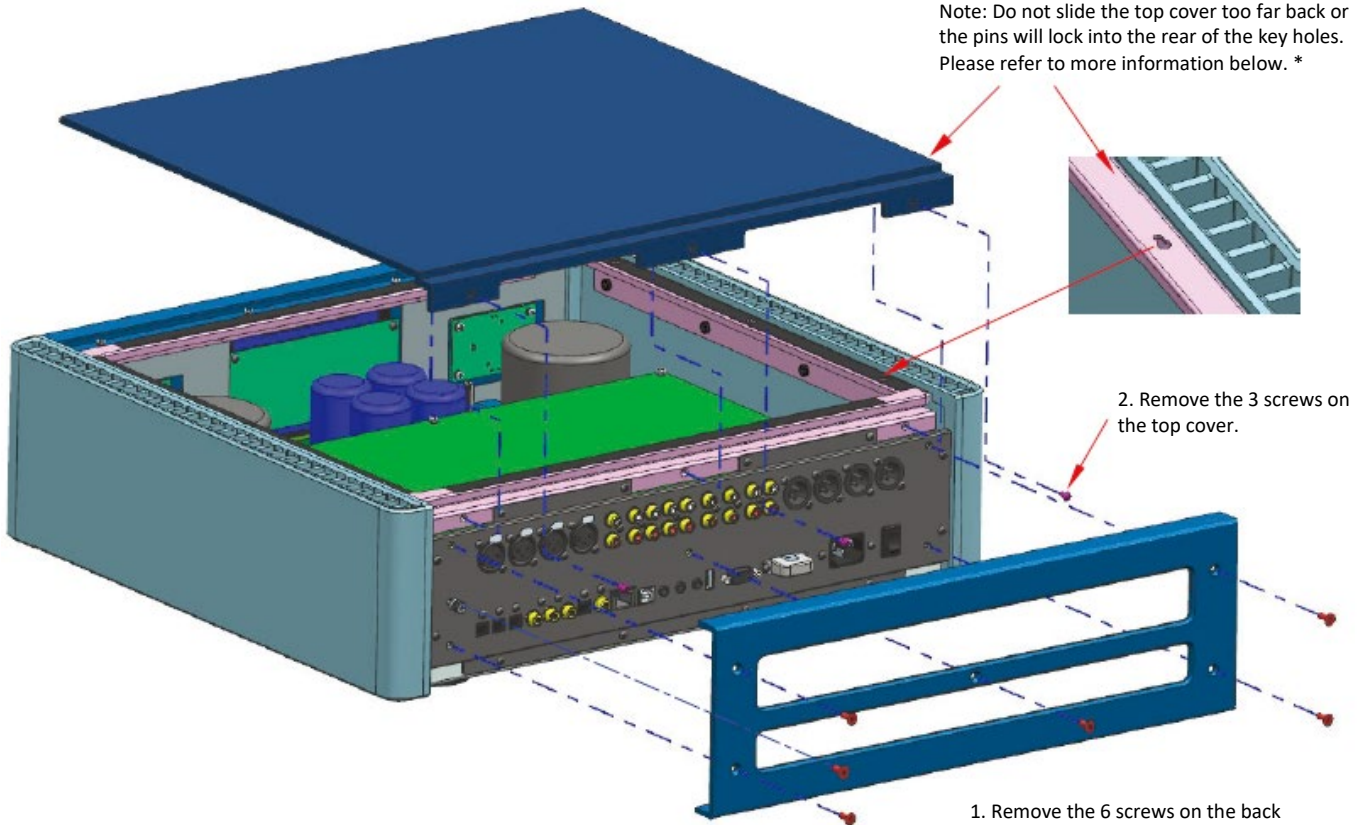
- Part Number of New Bluetooth Module 5.1 is **093E-BTM0002-D-3**
- New Bluetooth module 5.1 built Qualcomm IC as below photo.



The Instruction use Michi X5 Bluetooth Dongle Replacement as example:

- Follow below procedures to remove the top lip
- Remove all top cover screws

3. Slide the top cover back toward the rear panel of the unit about 5mm and take out the top cover.
Note: Do not slide the top cover too far back or the pins will lock into the rear of the key holes.
Please refer to more information below. *



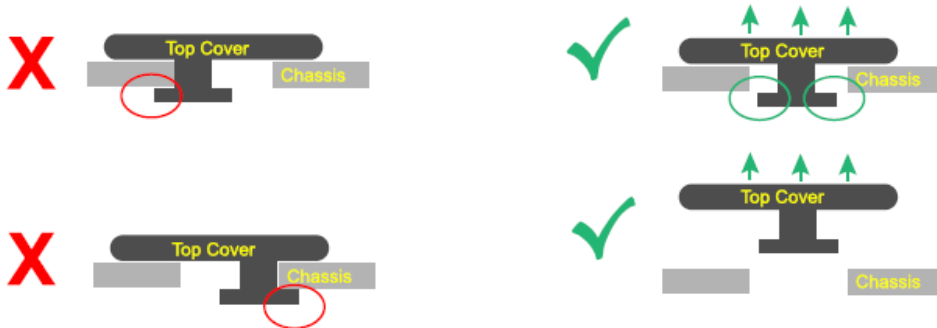
2. Remove the 3 screws on the top cover.

1. Remove the 6 screws on the back panel of P5 and the 7 screws on X3/X5.
Note: Hex tool dimension is 2.5mm

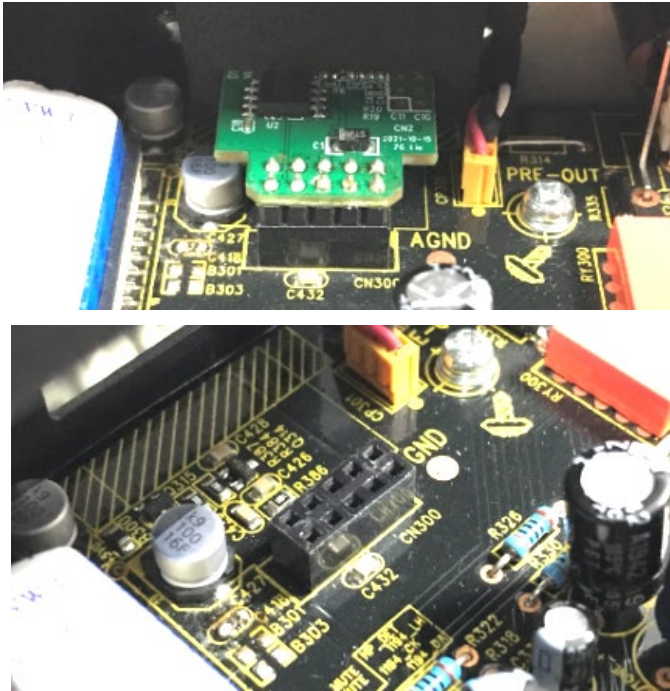


MICHI

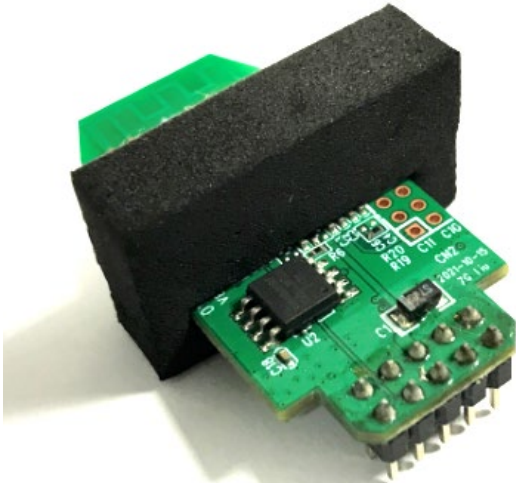
* Key Holes



b. Remove the Bluetooth 5.1 dongle from the socket.

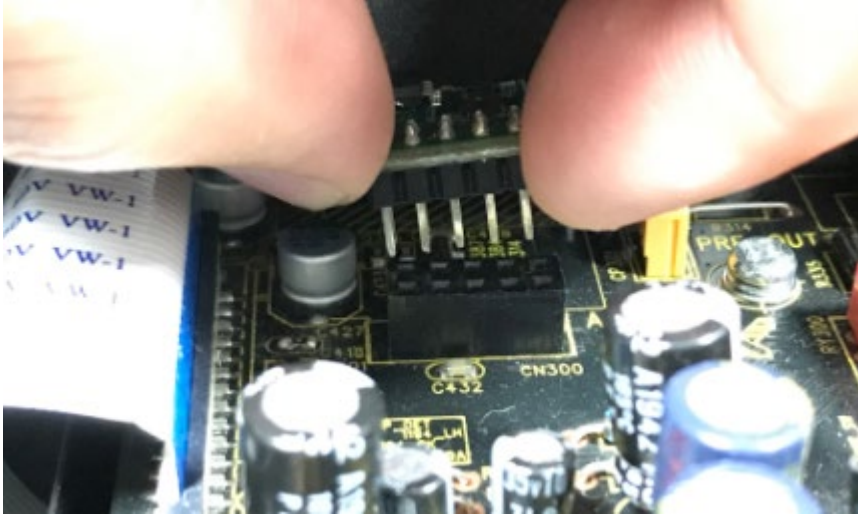


c. Prepare the new ordered Bluetooth dongle (with firmware V1.04 or higher installed)



MICHI

- d. Install the new Bluetooth 5.1 dongle in the socket. Pay CAREFUL attention to pin alignment to avoid damage to the dongle and the unit.



- e. Reassembly the unit and top cover.
f. Test to verify the new Bluetooth module works properly.

For more information or questions please contact your customer service representative.

-- End --