

## Technical Service Bulletin

April 23, 2025

### PC-USB V1.18 Firmware Release

The PC-USB V1.18 firmware improved compatibility when receiving 88.2kHz audio via digital source inputs. Updating to PC-USB V1.18 requires the below update process.

### Update Instruction

#### Preparation

Prepare a PC-USB to USB cable and a Windows computer with Michi PC-USB driver installed.

If you haven't installed the driver, you can visit <https://rotel.com/usb-drivers> to download the driver installation package.

#### Firmware Update

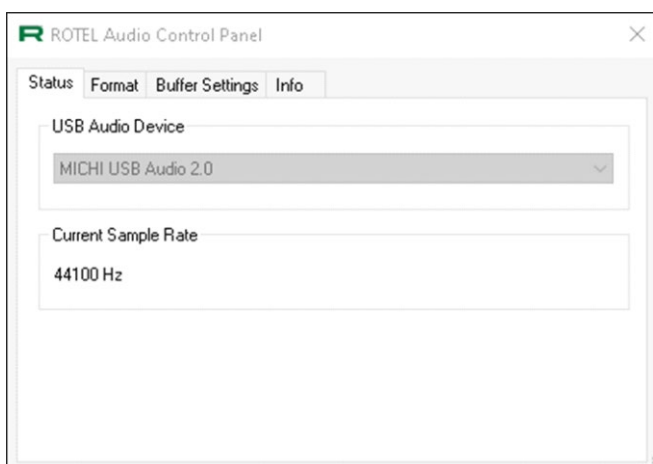
Follow these steps to update the PC-USB firmware.

1. Download the PC-USB V1.18 firmware via this link:  
[https://www.rotel.com/sites/default/files/software/xmos\\_mqa\\_spdif\\_DFU\\_v1.18.bin](https://www.rotel.com/sites/default/files/software/xmos_mqa_spdif_DFU_v1.18.bin)
2. Download the PC-USB update tool package via this link:  
<https://www.rotel.com/sites/default/files/software/ROTELAudioDfu.zip>.

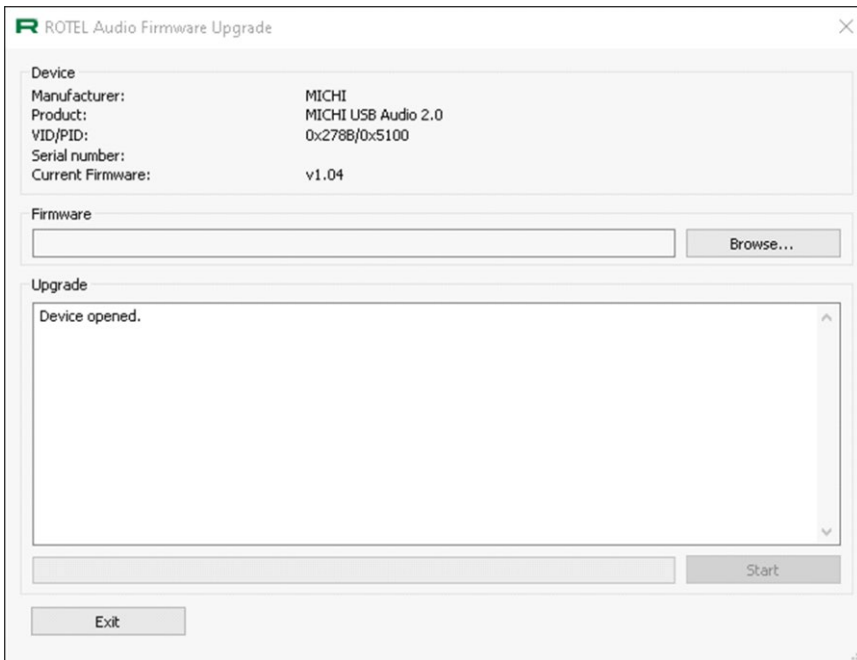
Unzip the package you will see the below file tree. "ROTELAudioDfu.exe" will be the application you need to run to update the firmware.

```
ROTELAudioDfu/  
ROTELAudioDfu.strings/  
ROTELAudioDfu.xml  
ROTELAudioDfu.exe
```

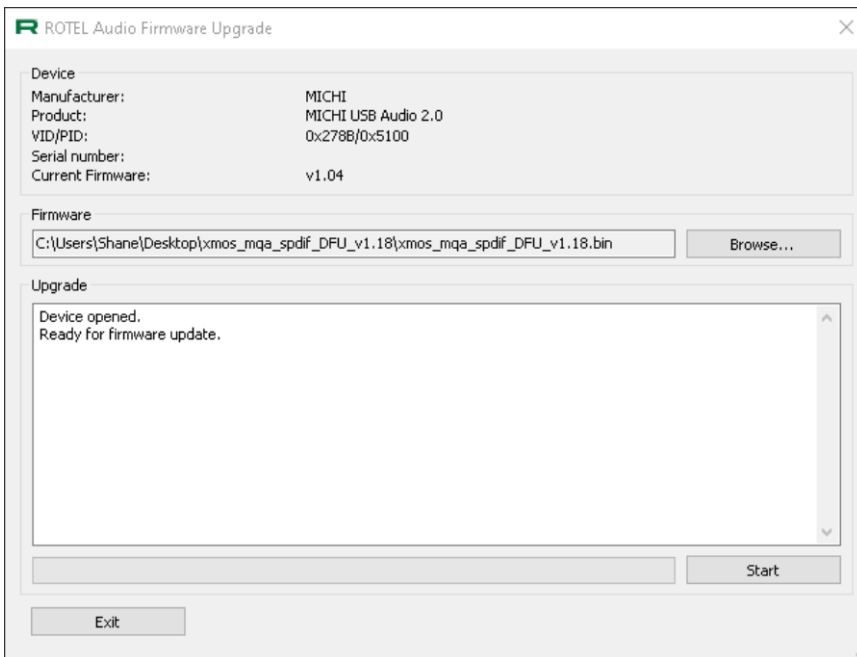
3. Switch the unit's input to PC-USB, then connect the unit to the Windows computer using the PC-USB to USB cable. Launch the Rotel Audio Control Panel app, you should see "Michi USB Audio 2.0" is displayed.



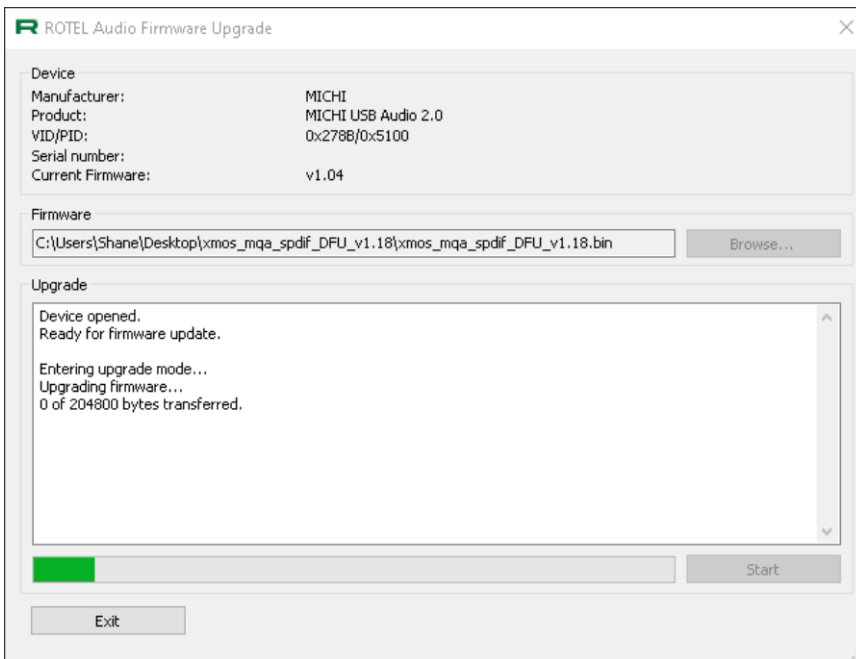
4. Launch the "ROTELAudioDfu.exe". You should see "Device opened." message in the control panel, which indicates that the connection was established successfully.



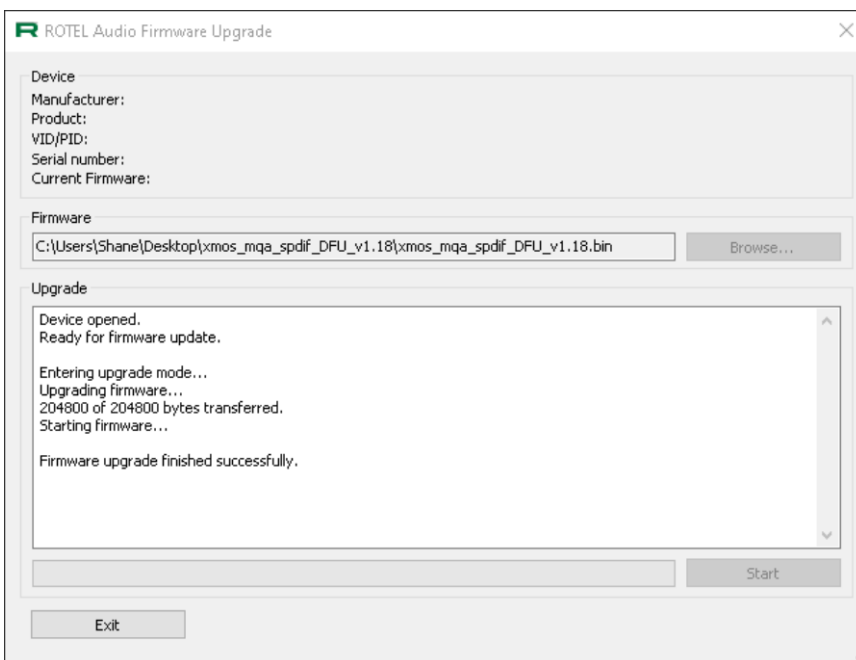
5. Click "Browse" to select the downloaded V1.18 bin file. Then you should see "Ready for firmware update" message in the control panel.



6. Click the “Start” button to start update. You should see the update status with a real-time progress bar.



7. When you see the “Firmware upgrade finished successfully” message, you should reboot the unit and check the PC-USB software version in the Setup menu.



*For more information or questions please contact your customer service representative.*

-- End --