

Technical Service Bulletin

December 11, 2025

Update Instruction

Preparation

Prepare a **PC-USB to USB cable** and a **Windows computer with Michi PC-USB driver installed**.

If you haven't installed the driver, you can visit <https://rotel.com/usb-drivers> to download the driver installation package.

Firmware Update

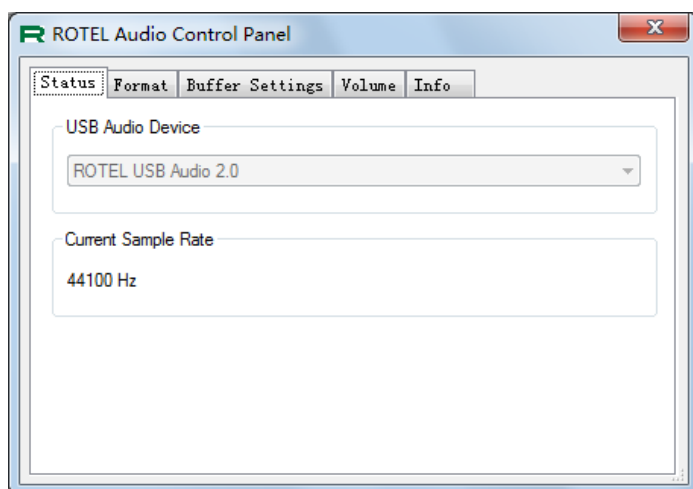
Follow these steps to update the PC-USB firmware.

1. Download the PC-USB V3.01 firmware via this link:
https://rotel.com/sites/default/files/software/rotel_xmos_dsd_spdif_DFU_v3.01.bin
2. Download the PC-USB update tool package via this link:
<https://rotel.com/sites/default/files/software/ROTELAudioDfu.zip>.

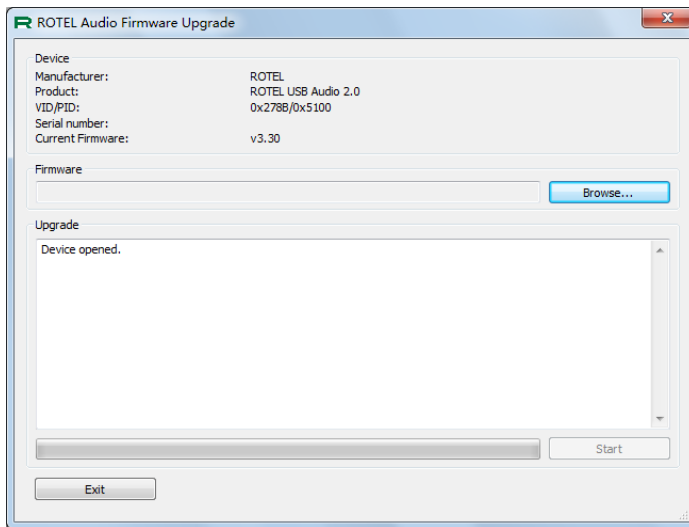
Unzip the package you will see the below file tree. "ROTELAudioDfu.exe" will be the application you need to run to update the firmware.

```
ROTELAudioDfu/  
  ROTELEAudioDfu.strings/  
    ROTELEAudioDfu.xml  
    ROTELEAudioDfu.exe
```

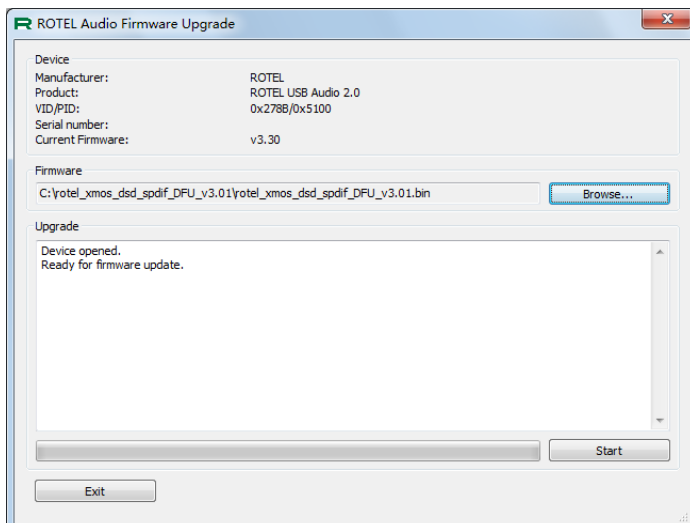
3. Switch the unit's input to PC-USB, then connect the unit to the Windows computer using the PC-USB to USB cable. Launch the Rotel Audio Control Panel app, you should see "Michi USB Audio 2.0" is displayed.



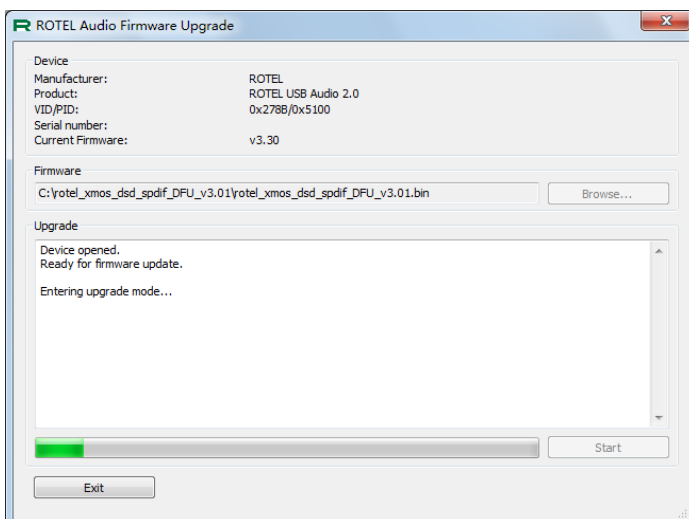
4. Launch the “*ROTELAudioDfu.exe*”. You should see "Device opened." message in the control panel, which indicates that the connection was established successfully.



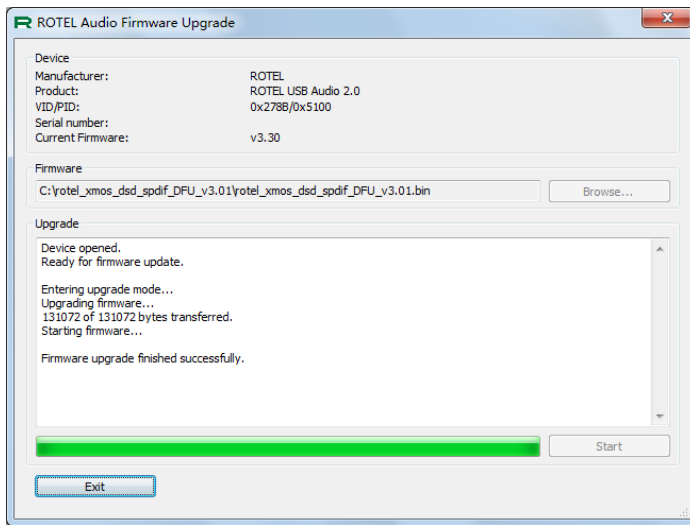
5. Click “Browse” to select the downloaded V3.01 bin file. Then you should see “Ready for firmware update” message in the control panel.



6. Click the “Start” button to start update. You should see the update status with a real-time progress bar.



7. When you see the “Firmware upgrade finished successfully” message, you should reboot the unit and check the PC-USB software version in the Setup menu.



For more information or questions please contact your customer service representative.

-- End --